

Day 1

Tomorrow
9:00-16:00

Ponferrada

1 Ponferrada Tourist Office

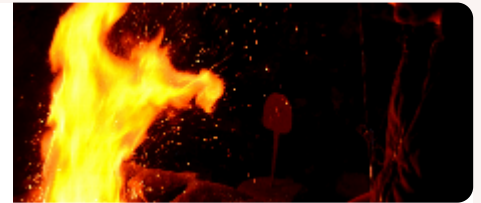
The Ponferrada Tourist Office provides key information to discover its history, monuments, nature, and unique cultural heritage.

 0.50 Horas

Compludo

2 Herrería de Compludo (Compludo Forge)

The Compludo Blacksmith, a historic gem, offers unique traditional craftsmanship in a natural setting ideal for cultural tourism.

 1.00 HorasAfternoon
16:00-21:00

Ponferrada

1 Railway Museum

The Ponferrada Railway Museum displays historic locomotives, highlighting its mining and industrial heritage in a fascinating cultural setting.

 0.70 Horas

Day 2

Tomorrow
9:00-16:00

Ponferrada

1 Castle of the Templars

Impressive medieval castle with towers, passageways and unique panoramic views. Ideal for photos, cultural walks and spectacular scenery.

 2.00 Horas



Fabero

2 Pozo Julia

Mining site that offers an interpretive and accessible visit through the memory and history of coal.

 2.00 Horas




Afternoon
16:00-21:00

Ponferrada

1 The Light Factory. Energy Museum

The Energy Museum, Light Factory, in Ponferrada, combines industrial history and science in a unique interactive and cultural space.


 0.75 Horas



Ponferrada

2 Cultural Power Plant

The Cultural Power Plant in Ponferrada is an innovative space that combines art, culture, and technology in a renovated industrial setting.

 0.75 Horas

